

# Analog HD (AHD)

## HH-5700 Series

### Analog High Definition DVR (1080p)



1080P

- Over 400m transmission with 5c-2v cable
- ezP2P™ Cloud Service without any complicated network setting
- ezLink™ for Instant Live Monitoring with Mac Address Input
- 2 x Typical **PUSH Functions**
  - PUSH Video Call to iPhone/iPad & Android Phone
  - PUSH Network Connection under Sensor Event
- **POS Function** up to 4 sets of POS Devices
- **Startup Wizard** for Easy Configuration
- Remote Monitoring by Remote S/W(CMS) & Smart Phone
- **Talk-Back Function** for 2-way communication with Smart Phone



[HH-5704]



[ HH-5708/5716 ]

MODEL	HH-5704 (4 Ch)	HH-5708 (8 Ch)	HH-5716 (16 Ch)
Compression Algorithm	Video : H.264, Audio : ADPCM		
Max. HDD Bay	1 x SATA HDD	2 x SATA HDD (1xSATA HDD & 1xDVD)	
Operating System	Embedded Linux		
Video	Input	4 Ch	8 Ch
	Loop-Out	Not Available	
Video Mode	NTSC/PAL Selectable		
Live Display (NTSC/ PAL)	120/100 fps	240/200 fps	480/400 fps
Screen Modes for Live Display	VGA & HDMI & Spot (or VGA & HDMI & Composite)	VGA & HDMI & Composite & Spot	
Video-Out	Monitor	3 x Main Monitors (Composite & VGA & HDMI) & 1 x Spot Monitor (Composite)	
	Resolution	HDMI: 800x600, 1024x768, 1280x1024, 1920x1080 (Selectable)	
Recording Speed (HD, NTSC/PAL)	352x240/288(CIF)	120/100 fps	480/400 fps
	960x480/576(960H)	120/100 fps	480/400 fps
	1280x720 (HD)	120/100 fps	480/400 fps
	1920x1080 (HD)	60/50 fps	240/200fps
Recording Resolution	HD : 1280x720, 1920x1080 NTSC : 352x240, 720x240, 720x480, 960x480, PAL : 352x288, 720x288, 720x576, 960x576		
Recording Modes	Continuous, Scheduled, Sensor-Activated & Motion Detection Recording Pre & Post Alarm Recording, Emergency Recording, Quick Backup		
Playback & Search	Speed	x1, x2, x4, x8, x16, x32	
	Ch & Resolution Function	1, 4, 9 & 16 Ch at 1080P (1920 x 1080) Intelli-Search by Time Bar, Calendar (Date & Time) and Event Search	
Audio Input / Output	1 Ch / 1 Ch		
Alarm Input / Relay Output	4 Ch / 1 Ch		
P/T/Z Control (RS-485)	Virtual Joy-Stick Control on screen by Mouse Pan/Tilt/Zoom/Focus/Iris by Keyboard		
LAN	Gigabit Ethernet (RJ45) Fixed IP, DHCP & DDNS		
Network Function	1) Dual-Stream (Local Recording & Network Transmission) 2) Network Bandwidth Control (25 Kbps ~ 1000 Mbps) 3) Live Monitoring, Remote Playback and File Backup (Triplex-on-Remote) 4) Time Synchronization by NTP Server ("pool.ntp.org") 5) Remote & E-Mail Notification, Remote System Reboot by IE, Remote PTZ Control 6) P2P Cloud Service (Auto Port forwarding)		
Remote Management	Software	CMS & MMS (SmartViewerPro or MobileViewerPro)	
	Web (IE)	Live Monitoring, Playback & System Configuration	
Backup Device	Internal	Not Available	DVD Burner (Option)
	External	Local Backup by USB ODD, Network Backup by CMS, File Upload to FTP Server	
System Recovery after Power Failure	Auto-Reboot and Journaling File System		
Advanced Functions	1) Firmware Upgrade by USB & CMS over Network 2) Import & Export of Setting Value, Water-Mark, AVI File Backup 3) Quick Setup to designate Recording Period 4) HDD SMART Info (Model, Capacity, Bad Sector, Temperature, Used Period) 5) Warning Alarm for System Over-Temperature 6) Help Message for easy setup & Multi-Language support 7) Digital Zoom for both Live & VOD mode		
POS	Text-in Based (USB to Serial support, TCP/IP Network) / Display POS Data on Live & Playback		
System Operation	Front Button, IR Remote Controller, USB Mouse, Keyboard (Option)		
Power	12V x 3A D/C	12V x 5A D/C	
Operating Temperature and Humidity	5~40 °C / 20~90% RH		
Dimension (WxDxH)	264 x 245 x 44 (mm)	360 x 380 x 66 (mm)	
Certification	CE & FCC & KCC & WEEE, RoHS		

(\*) Specification is subject to change without prior notice.

## ezP2P™ Cloud Service (www.ezp2p.com)

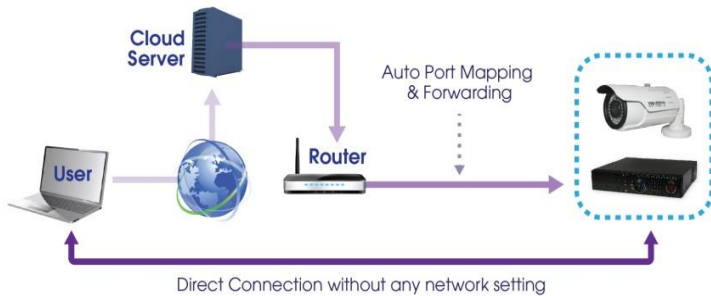
ezP2P™ Cloud Service is a cloud-based video management system without any complicated network setting. Just login to ezP2P™ Cloud Server (www.ezp2p.com) with your own account and enjoy thumbnail preview and instant live monitoring.



[Main Page]



[Preview]



## ezLink™ with Mac Address

The easiest way to connect to the DVR just by Mac Address.



## Startup Wizard

Startup Wizard will guide you through the whole process of system startup. You can setup major DVR Configuration by just following the steps which Wizard guides and also can reconfigure these setting at any time by accessing to main menu.



[Language]



[Date/Time]



[Record]



[HDD]



[Network]

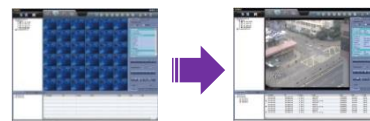
## Typical PUSH Function

2 PUSH Functions below provides you with efficient monitoring and control of your DVR. It allows you to be free from constant attention to the event that may or may not happen.

**PUSH Video Call**  
to iPhone & Android Phone



**PUSH Network**  
Connection under Sensor Event



## Integrated Network Solution

Guarantee unlimited scalability and seamless integration of all FOCUS products such as DVR, NVR & IP Camera over unique network.



[CMS]



[SmartViewerPro / MobileViewerPro]